

**Z1198 LARGE CAPACITY OIL INTERCEPTOR WITH OIL LEVEL SENSOR**



**ENGINEERING SPECIFICATION**

Zurn Z1198 oil interceptor with a fiberglass sensor box containing an electronic oil level sensor (specify right or left side<sup>†</sup>) features large capacity, acid resistant coated interior and fabricated steel exterior, and a fiberglass display box with one green power light, red oil level light, audible alarm and junction box. Includes bronze cleanout plug and visible double wall trap seal, removable combination pressure equalizing/flow-diffusing baffle and sediment bucket, horizontal baffle, and vent connections either side. Secured, gasketed, non-skid cover comes complete with flow control fitting. Regularly furnished with inlet and outlet in high position.

**NOTES**

- <sup>†</sup>Installed sensor box is mounted on the left- or right-hand side of the unit when facing inlet (must be specified).
- Power supply 120V GFCI.

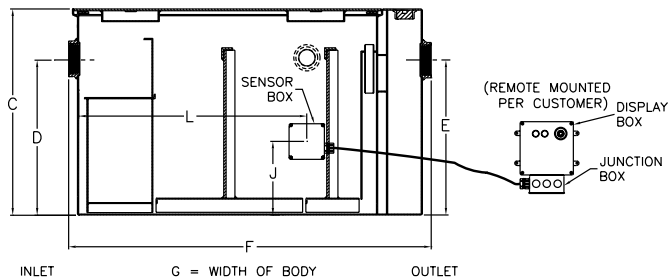
**RECOMMENDED INSTALLATIONS**

Sitting on the floor or recessed in a pit only. (A pit installation requires that a drain or sump pump be installed to keep the pit relatively dry.)

For pit installation, see Form No. IT62.

**CAUTION**

Interceptors must be maintained periodically in order to ensure proper operation of the system. Follow cleaning schedule based on usage.



PREFIXES	DESCRIPTION	SIZE	LIST PRICE
<b>Z1198</b>	Acid Resistant Coated Fabricated Steel	75	<b>43,631.00</b>
		100	<b>46,037.00</b>
		125	<b>51,203.00</b>
		150	<b>53,427.00</b>
		200	<b>69,256.00</b>
		250	<b>77,821.00</b>
		300	<b>77,821.00</b>
		350	<b>94,375.00</b>
		400	POA
		450	POA
500	POA		

SUFFIXES	DESCRIPTION	ADD
<b>-PW</b>	Plug Wrench	<b>83.00</b>

BEST SELLERS	LIST PRICE
Z1198-75-3IP	<b>43,631.00</b>
Z1198-100-3IP	<b>46,037.00</b>

Flow Rate gpm [LPM]	Inlet/Outlet inch [mm]	Water Capacity gallon [L]	Oil Capacity gallon [L]	Approximate Weight lb [kg]	No. of Covers	Dimensions in inches [mm]					
						C	D/E	F	G	J	L
75 [284]	3 [76]	65 [246]	20 [76]	332 [151]	1	22-3/4 [578]	18-1/2 [470]	36 [914]	28-5/8 [727]	10 [254]	25-3/4 [654]
100 [379]		110 [416]	27 [102]	432 [196]		27 [686]	23 [584]	42-3/4 [1086]	33-5/8 [854]	15-3/8 [391]	30-1/8 [765]
125 [473]		150 [568]	33 [125]	780 [354]		30-1/8 [765]	24-1/2 [622]	49-1/4 [1251]	40 [1016]	15-11/16 [398]	36-5/8 [930]
150 [568]	4 [102]	190 [719]	40 [151]	888 [403]	2	30-3/4 [781]	25-1/4 [641]	56 [1422]	41-3/8 [1051]	17-5/16 [440]	43-7/8 [1114]
200 [757]		265 [1003]	53 [201]	1055 [479]		35-1/2 [902]	29-7/8 [759]	61 [1549]	43-5/8 [1108]	21-1/16 [535]	46-5/8 [1184]
250 [946]		460 [1741]	67 [254]	1438 [652]		41 [1041]	36 [914]	71 [1803]	51-3/8 [1305]	27-13/16 [706]	56-5/8 [1438]
300 [1136]	5 [127]	660 [2498]	80 [303]	1840 [835]	2	46-1/4 [1175]	39-5/8 [1006]	80 [2032]	58-3/8 [1483]	32 [813]	65-5/8 [1667]
350 [1325]		860 [3255]	93 [352]	2180 [989]		50-1/2 [1283]	43-7/8 [1114]	87 [2210]	63-5/8 [1616]	35-5/16 [897]	74-1/8 [1883]
400 [1514]		1090 [4126]	107 [405]	2536 [1150]		54-1/4 [1378]	47-5/8 [1210]	94 [2388]	67 [1702]	39-5/16 [999]	79-1/8 [2010]
450 [1703]	6 [152]	1275 [4826]	120 [454]	2816 [1277]	3	55-1/4 [1403]	48-5/8 [1235]	100 [2540]	72 [1829]	40-3/8 [1026]	85-3/8 [2169]
500 [1893]		1435 [5432]	133 [503]	2970 [1347]		57-1/4 [1454]	51-5/8 [1311]	104 [2642]	74 [1880]	43-3/16 [1097]	88-3/8 [2245]